

KNOW NO BOUNDS.

DA40 Diamond Stars



 **Diamond**
AIRCRAFT



This is your airplane.

Stunning good looks. Durable construction. Thrilling performance. Unbeatable safety record. These are a few of the many attributes that showcase why the DA40 XLS and DA40 CS are our best-selling aircraft. Just ask DA40 owners what they love about their plane and they'll simply answer 'everything'.

The DA40 is designed to be the first choice for discerning pilots – and it's easy to get excited about. Sit in the new cockpit under the new larger bubble canopy and be amazed by the incredible visibility. Put the Garmin G1000's advanced capabilities to work in IFR, or to pursue your next rating. Get to your next business meeting faster. Take your family on a fun holiday. Watch the miles disappear as you cruise at 150 kts while burning only 10 gph. Enjoy the knowledge that you've bought the best value in the industry. Add it all together, and you've got an airplane that appeals to both your right brain and your left brain. Who said owning an airplane was all about compromises?

DA40 XLS

The Discerning Pilot's First Choice

Whether you're new to aviation or a seasoned IFR pilot, the DA40 XLS is the discerning pilot's first choice. The DA40 is built by pilots passionate about flying, so your first impression will be the sheer joy of taking to the air – its quickness off the runway, the crisp response of the push-pull rod-activated controls, the panoramic visibility out of the bubble canopy. Keeping your head outside is easy in this plane – even as the capable Garmin G1000 cockpit provides unparalleled information just at your fingertips. As a new pilot, you'll take comfort in the big moving map – while advanced pilots will leverage WAAS, the digital Garmin GFC 700 autopilot, digital on-screen charts and programmable Victor airways and procedure turns, to fly instrument approaches with new confidence and precision, even into unfamiliar airports.

Safety First

Whether at 50 hours or 1,000 hours, smart pilots will take comfort in the DA40's industry-leading safety record, and the safety approach behind it – active safety to prevent accidents – for example: benign handling at slow speeds, short take-off and landing distances, superior visibility and avionics to improve situational awareness, and failure-resistant design. Passive safety to reduce injuries when accidents do happen, include: aluminum fuel cells protected between two carbon-fiber spars to prevent post-impact fires, a 26G cabin with a protected passenger safety cell, and many additional safety items such as airbag seatbelts and a 406 MHz ELT.

Financially Savvy

Performance, advanced technology, luxury, safety – and, of course, the best value in the industry – the DA40s offer more, at a lower total cost of ownership than other planes.

An attractive purchase price is just half the story. Excellent fuel economy at only 10 gph at 150 kts cruise, very competitive insurance rates due to the great safety record and economical maintenance-friendly design, and high residual values, make the DA40 a financially savvy pilot's choice.

"The DA40 XLS was designed to be the best plane a new pilot could buy – and it truly is. No one should buy a plane in this category without first flying the DA40 XLS. It's simply more fun to fly, and offers the features everyone wants, with the looks, handling and performance that no one else has."

Fred Ahles, Premier Aircraft Sales, Florida



"As a company, Diamond has one of the most remarkable safety records in all of light aircraft general aviation... In our last in-depth review of accident trends in our September 2006 issue... Diamond's fatal average was a remarkable 0.16/100,000 flight hours, compared to 1.2/100,000 for the GA fleet... Over the years, we have noticed that Diamond airplanes show little tendency toward post-crash fires. In fact, we haven't been able to find any significant fires in Diamond airplanes, which we find to be a remarkable record due in part to the airplane's design... We think Diamond can rightly claim the best safety record in light aircraft GA."

Aviation Consumer Diamond DA40 Used Aircraft Guide,
February 2008



"I initially used my first DA40 primarily for pleasure and training. Lately, with my new DA40 XLS, I am doing a lot more business travel, around Florida, the surrounding states, and the Bahamas. I love the Diamond – and the DA40 XLS with the G1000 cockpit, the extra space under the restyled canopy, an upgraded interior, 15-20 kts more speed at similar fuel flows, and extra range with the long-range tanks is a great improvement on an already wonderful product."

Juan Bermudez, DA40 Owner, Florida

Travel in Style

Imagine taking a luxury car, adding wings, and flying it direct to your destination at over 165 mph without worrying about traffic or speeding tickets. The DA40 XLS enables you to fly to business meetings or off on a fun holiday without the hassles of commercial air travel. The spacious cabin and generous baggage area means you can take your colleagues, friends or family with you and still have room for gear. The comfortable seats and panoramic views make long trips a pleasure. The new, taller and wider canopy provides more head-and-shoulder room for you and your passengers, and the XM Radio and MP3 inputs let you listen to your favorite programs while you watch the miles pass. Well-designed accents such as: luxuriously upholstered interior panels, aluminum-framed genuine wood inlay accents, engraved brushed aluminum trim, carbon-fiber sill plates, quality materials including a choice of premium leather seats, thoughtful touches like a hidden storage area for manuals, oil and chocks you're truly traveling in style.

Advanced Avionics

A cockpit like no other. You have to fly it to believe it. The DA40 XLS Garmin G1000 cockpit brings so much advanced technology, in such a logical package, only a flight can make it real. From unparalleled situational awareness using the two 10-inch screens, with traffic, weather, terrain and chart information – to the Garmin GFC 700 digital autopilot, which flies regular and WAAS-approaches with unparalleled precision – fly the DA40 XLS, and you'll realize that 21st century avionics are no longer a dream, but an affordable reality.

The DA40 XLS comes standard with most factory options – but feel free to add more, from Garmin ChartView geo-synchronized charts and TAS 600 active traffic, to Diamond's Premium Care maintenance program, which covers all scheduled maintenance for two years and 250 hours – buying a DA40 XLS leaves nothing to chance.

"The view from the DA40's bubble canopy of the Rockies, the cornfields in Kansas, the huge thunderstorms in Missouri, and the New York City skyline are images I'll remember forever."

Colin Summers, DA40 Owner, California



DA40 CS

A Plane Built Specifically for You

No two pilots are alike. Different missions mean different equipment needs – which is why you can spec your DA40 CS just the way you want it. Want to make it an economical traveling plane? Start with the very capable base plane and its Garmin G1000 cockpit, then add long-range tanks, the extended baggage compartment, the Garmin GFC 700 autopilot and the XM Weather option – voila, a plane just for you. Is performance your thing? Add the Powerflow tuned exhaust system and the performance landing gear. Planning to put your DA40 CS on the flight line in a colder climate? Keep it simple and economical by just adding the engine pre-heater and the sheepskin seat covers. No matter what your needs, the DA40 CS can be customized to be as unique as the way you fly.



training characteristics – forgiving low-speed handling, great performance, superb visibility, and a reliable, industry-standard cockpit. Plus, the numbers just have to work out – low initial acquisition cost, affordable insurance, fast and low-cost maintenance, good customer support for quick turnaround, great quality for high up time, and low fuel burn. Today's smart leaseback buyers and flight school owners are demanding a lot – and Diamond delivers.

At Diamond, we understand your needs like no other. With hundreds of Diamonds used in flight training organizations, our fleet of aircraft is designed to meet your needs, and as the cornerstone of the fleet, the DA40 CS precisely fits your needs as flight training provider or leaseback owner.

Sleek looks, robust composite construction, Garmin G1000 glass cockpit, economical four-cylinder Lycoming engine, sipping 8 gph in a typical training setting, a maintenance-friendly design, Diamond's well-known quality customer service support, low insurance rates, and much more – no wonder many universities, colleges and local flight schools choose the DA40 Diamond Star as a core airplane in their modern fleet.

"I bought my DA40 as the plane I would get my instrument rating in and as a plane that could grow with me as I do more serious traveling both for business and pleasure. I was looking for a good upgrade path – I am very excited about the DA50, and transitioning into that from my DA40 looks really easy to do."

Brian Noble, DA40 Owner, Ohio

The First Choice for Flight Training Organizations

Adding a Diamond DA40 CS to a flight line is an all-around smart business decision. Modern, composite-design aircraft with advanced avionics are critical in today's competitive environment to attract and retain both students and flight instructors. A smart plane choice should also offer great

"The Diamond Aircraft we operate in our DFC help us to market to prospective students. With their sports car look and feel, having a stick vs. a yoke, being easy to fly and so responsive and an excellent safety record, there are so many positives. As a matter of fact, we give prospective students a 20-30 minute introductory flight in the DA40 to convince them that flying is for them. Our students want to fly state-of-the-art aircraft and once they get in, they are hooked on Diamonds."

Mike Sykes, US Flight Academy, Texas



The first choice cockpit.

WAAS-Certified Garmin G1000 and Garmin GFC 700 Automatic Flight Control System

Not all glass is created equal. Once you fly the Garmin G1000 cockpit on the DA40, and its fully integrated Garmin GFC 700 digital autopilot, you won't want to fly anything else. The Garmin G1000 glass cockpit is the clear industry standard, and has earned a reputation as a very reliable system, backed by Garmin's world-class customer support. The Garmin GFC 700 digital autopilot is a pilot's dream. Significantly more precise than analog systems, it's fully integrated into the Garmin G1000 system, supports constant-speed climbs and descents (called "flight level changes", just like in jets), and can even step you down automatically on en route and approach step-down fixes, thanks to the Garmin G1000's built-in VNAV capability. More integration, more functionality, more precision, better reliability – it all adds up to reduced pilot workload and better safety.



Traffic Options

TIS-B traffic comes standard in each DA40, and displays traffic in areas covered by terminal radar systems. For those looking for extra coverage, TAS Active Traffic is a transponder-based system, which displays traffic anywhere, independent of ground-based stations, and at a higher refresh rate than TIS-B.



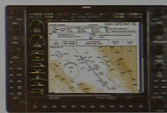
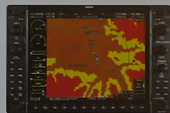
PFD – Crucial Information at your Fingertips

Flight director; v-speed indicated on the airspeed band; bugs for altitude, vertical speed, and heading; HSI with multiple CDI and Bearing Pointers needles; constant wind vector and ground track display; plus an insert-map to display terrain or traffic information – it's like a pilot's dream for well-displayed information has finally come true.



MFD – Enhanced Features

A good tool, improved, the MFD now offers a full-page engine display for at-a-glance information on all systems on your airplane. To make flight planning easier, it now supports direct entry of Victor airways, as well as procedure turns, holds and DME-arc entries – which the Garmin GFC 700 autopilot can then execute flawlessly.



Terrain and Weather Avoidance

TAWS-B technology improves situational awareness for night and IFR flights, and reduces the risk of CFIT (controlled flight into terrain). A forward-looking system using advanced algorithms, it provides aural and visual alerts of hazards close to the aircraft's flight path. XM Weather provides critical weather information via satellite, from NEXRAD radar to TAFs, METARS to AIRMETS and SIGMETS, and much more.

Electronic Chart Choices

Each DA40 XLS and DA40 CS now comes standard with Garmin FliteCharts and Garmin SafeTaxi airport diagrams for North America. The optional Garmin ChartView system ups the ante by extending world-wide coverage, and by superimposing a geo-synchronized display of your aircraft on the chart for even better situational awareness on approach.



DA40 XLS

Specifications:

Engine	Lycoming IO-360-M1A
Horsepower	180 hp
Propeller	MT 3-blade composite constant-speed
Airworthiness category	Normal and utility
Length	26 ft 5 in
Height	6 ft 6 in
Wing span	39 ft 6 in
Maximum takeoff weight	2,645 lbs
Useful load	860 lbs (standard equipped airplane)
Fuel capacity, usable	50 gal
Fuel	AVGAS 100LL
Takeoff distance, ground roll	1,175 ft
Takeoff distance, 50-foot obstacle	1,700 ft
Landing distance, ground roll	1,155 ft
Landing distance, 50-foot obstacle	2,093 ft
Rate of climb, sea level	1,120 ft/min
Maximum operating altitude	16,400 ft
Maximum speed	157 ktas
Cruise speed at 75%	150 ktas/10 gal/hr
Stall speed, full flaps	49 kias
Maximum demonstrated crosswind	20 kts
Range, at 75% 45 minute reserve	720 nm
Range, at 55% 45 minute reserve	785 nm

Standard equipment:

- Garmin G1000 glass panel cockpit
- Garmin GDU 1040, 10-inch Primary Flight Display (PFD)
- Garmin GDU 1044, 10-inch Multi-Function Display (MFD) with autopilot control unit
- Dual Garmin GIA 63W VHF comm, VHF nav with ILS localizer and glideslope, WAAS-certified GPS, IFR enroute and approach certified
- Garmin GTX 33 Mode S transponder with TIS traffic
- Garmin GMA 1347 digital audio system

Optional equipment:

- Avidyne TAS 600 active Traffic Advisory System
- Garmin ChartView Approach Plates (subscription required)
- Becker 3500 ADF, remote mounted
- Honeywell KN63 DME, remote mounted
- Hartzell 2-blade scimitar composite propeller
- Engine pre-heater system
- AmSafe Inflatable Restraints (rear)
- Removable sheepskin seat cushions
- Non-standard exterior stripe color
- Custom stripe set
- Premium Care maintenance program

- Garmin GDC 74, digital air data computer, constant display of TAS, wind direction, VS and OAT
- Garmin GRS 77 solid-state Attitude and Heading Reference System (AHRS)
- Garmin GMU 44 magnetometer
- Garmin GFC 700 Automatic Flight Control System (AFCS) including 2-axis digital autopilot with flight director
- Garmin GDL 69A satellite data link — NEXRAD radar, satellite text and graphic weather data with intotainment (subscription required)
- Garmin TAWS-B Terrain Awareness System
- Garmin SafeTaxi and Garmin FliteCharts (subscription required)
- 406 MHz emergency locator transmitter (ELT)
- Powerflow tuned exhaust system
- Extended range fuel tanks (50 US gal)
- Performance landing gear kit
- High intensity discharging landing and taxi lights
- Platinum leather interior with color choice
- Electrically adjusted rudder pedals
- AmSafe Inflatable Restraints (front seats)
- 4-way Baggage Compartment System
- Standard exterior striping with color choice

DA40 CS



Specifications*:

Engine	Lycoming IO-360-M1A
Horsepower	180 hp
Propeller	Hartzell 2-blade aluminum constant-speed
Airworthiness category	Normal and utility
Length	26 ft 5 in
Height	6 ft 6 in
Wing Span	39 ft 6 in
Maximum takeoff weight	2,645 lbs
Useful load	900 lbs (standard equipped airplane)
Fuel capacity, usable (standard/optional)	40 gal / 50 gal
Fuel	AVGAS 100LL
Takeoff distance, ground roll	1,175 ft
Takeoff distance, 50-foot obstacle	1,700 ft
Landing distance, ground roll	1,155 ft
Landing distance, 50-foot obstacle	2,093 ft
Rate of climb, sea level	1,120 ft/min
Maximum operating altitude	16,400 ft
Maximum speed	157 ktas
Cruise speed at 75%	145 ktas/10 gal/hr
Stall speed, full flaps	49 kias
Maximum demonstrated crosswind	20 kts
Range, at 75% 45 minute reserve	720 nm
Range, at 55% 45 minute reserve	785 nm

*Performance specifications may vary depending on equipment selected

Optional equipment:

- Garmin GFC 700 Automatic Flight Control System (AFCS) including 2-axis digital autopilot with flight director (exchange Garmin GDU 1044 MFD with autopilot control unit for Garmin GDU 1040 MFD)
- Garmin GDL 69A satellite data link — NEXRAD radar, satellite text and graphic weather data with infotainment (subscription required)
- Garmin TAWS-B Terrain Awareness System
- Avidyne TAS 600 active Traffic Advisory System
- Garmin ChartView Approach Plates (subscription required)
- Becker 3500 ADF, remote mounted
- Honeywell KN63 DME, remote mounted
- Powerflow tuned exhaust system
- Extended range fuel tanks (50 US gal)
- Performance landing gear kit
- Engine pre-heater system
- Premium grey leather interior
- AmSafe Inflatable Restraints (front seats)
- AmSafe Inflatable Restraints (rear seats)
- Electrically adjusted rudder pedals
- 4-way Baggage Compartment System
- Removable sheepskin seat cushions
- Non-standard exterior stripe color
- Custom stripe set
- Premium Care maintenance program

Standard equipment:

- Garmin G1000 glass panel cockpit
- Garmin GDU 1040, 10-inch Primary Flight Display (PFD)
- Garmin GDU 1040, 10-inch Multi-Function Display (MFD)
- Dual Garmin GIA 63W VHF comm, VHF nav with ILS localizer and glideslope, WAAS-certified GPS, IFR enroute and approach certified
- Garmin GTX 33 Mode S transponder with TIS traffic
- Garmin GMA 1347 digital audio system
- Garmin GDC 74 digital air data computer, constant display of TAS, wind direction, VS and OAT
- Garmin GRS 77 solid-state Attitude and Heading Reference System (AHRS)
- Garmin GMU 44 magnetometer
- Garmin SafeTaxi and Garmin FliteCharts (subscription required)
- 406 MHz emergency locator transmitter (ELT)
- Hartzell 2-blade aluminum constant-speed propeller
- High intensity discharging landing and taxi lights
- Standard grey fabric interior
- Standard exterior striping with color choice

Aircraft shown in all marketing materials, websites or brochures, may contain non-standard features, optional equipment or equipment not yet certified by a given authority, and which, if available, may be subject to additional cost. Actual weight and balance information will vary depending on options installed on aircraft. Only aircraft specific weight and balance data should be consulted for flight planning. Aircraft specifications, weights, equipment, lists, color choices, model references and other representations made verbally or appearing on websites, in brochures or other marketing materials are for general information purposes and do not constitute an inducement to enter into, or an agreement for the purchase and sale of aircraft. Only statements and representations set out in actual contracts entered into with Diamond Aircraft or its authorized distributors may be relied upon. Prices and specifications are subject to change without notice at any time prior to delivery.

Join the Diamond family.

Each member of our Diamond distribution network is a pilot committed to aviation. They're as excited about Diamond airplanes as we are, and they're eager to share their years of aviation experience with you. Locally owned and operated, Diamond distributors know your market and work with you as you research your first or next plane to buy. They don't look at aircraft ownership as one-size-fits-all. They take the time to listen to your goals and concerns, and determine the different missions you'll fly. Because they're able to offer a full line of planes, they can help you to select the best aircraft, or progression of aircraft, that's right for you, and help you trade up when the time comes. Most Diamond distributors also offer their own service facilities, and you can also find maintenance assistance from our network of independent Diamond Authorized Service Centers.

Contact us today at 1-888-465-7094.

Or find your local Diamond distributor online at www.diamondaircraft.com